



# Newfoundland Labrador

... it's happening here.



**Larry Hicks, P.Geo.**

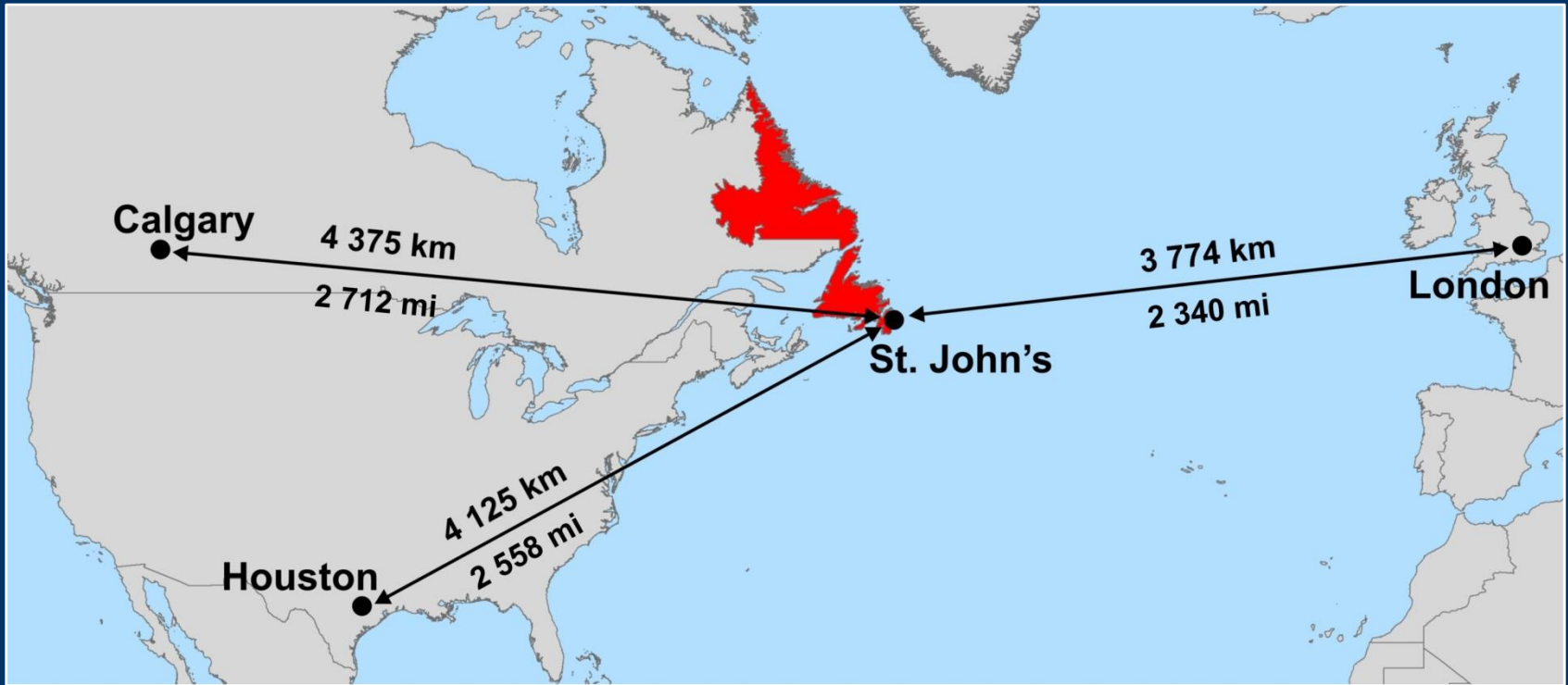
Manager, Petroleum Geoscience

Department of Natural Resources - Energy

Government of Newfoundland & Labrador, Canada 

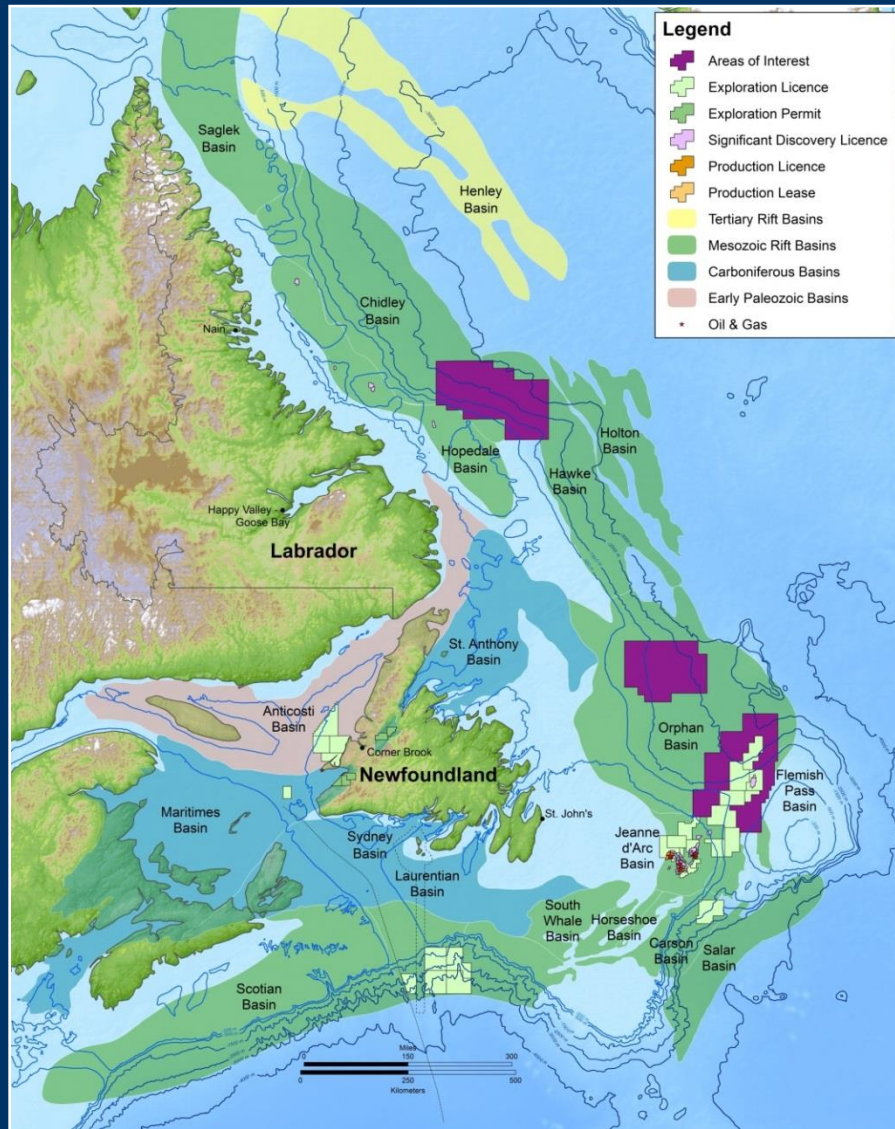
**APPEX 2015**

# Newfoundland and Labrador



- ✓ Most easterly Province in Canada
- ✓ More than 4000 km of coastline - water depth up to 4000 meters
- ✓ Population ~ 500,000
- ✓ Financially and Politically Stable
- ✓ Adjacent to Northeast US energy market
- ✓ Access to EU markets

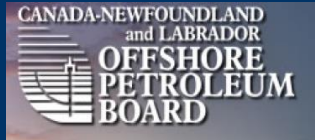
# Energy Warehouse



- ✓ Home to some of the largest unexplored basins in the world
  - ✓ Area of petroleum potential in excess of **1 million km<sup>2</sup>**
  - ✓ Four offshore projects producing ~ **30%** of Canada's conventional light crude oil
  - ✓ Light crude production of ~ **80 million barrels** annually
  - ✓ Total cumulative oil production around **1.5 billion barrels** (1997)
- < 6% held under licence**

# Regulatory Framework

## OFFSHORE



- ✓ Administered by joint Federal / Provincial Board
- ✓ Canada – Newfoundland & Labrador Offshore Petroleum Board (**C-NLOPB**)
- ✓ Office – St. John's, NL
- ✓ Maintains Data Repository, Core Storage Facilities, etc.
- ✓ Web: [www.cnlopb.ca](http://www.cnlopb.ca)



## ONSHORE



- ✓ Administered by Province
- ✓ Department of Natural Resources (**DNR**) – Energy Branch
- ✓ Office – St. John's, NL
- ✓ Maintains Data Repository, Core Storage Facilities, etc.
- ✓ Web: [www.nr.gov.nl.ca/nr](http://www.nr.gov.nl.ca/nr)





# Activity Summary

## Wells Drilled Offshore

Exploration	157
Delineation	56
Development	198

## Discoveries

Oil	20
Gas	16

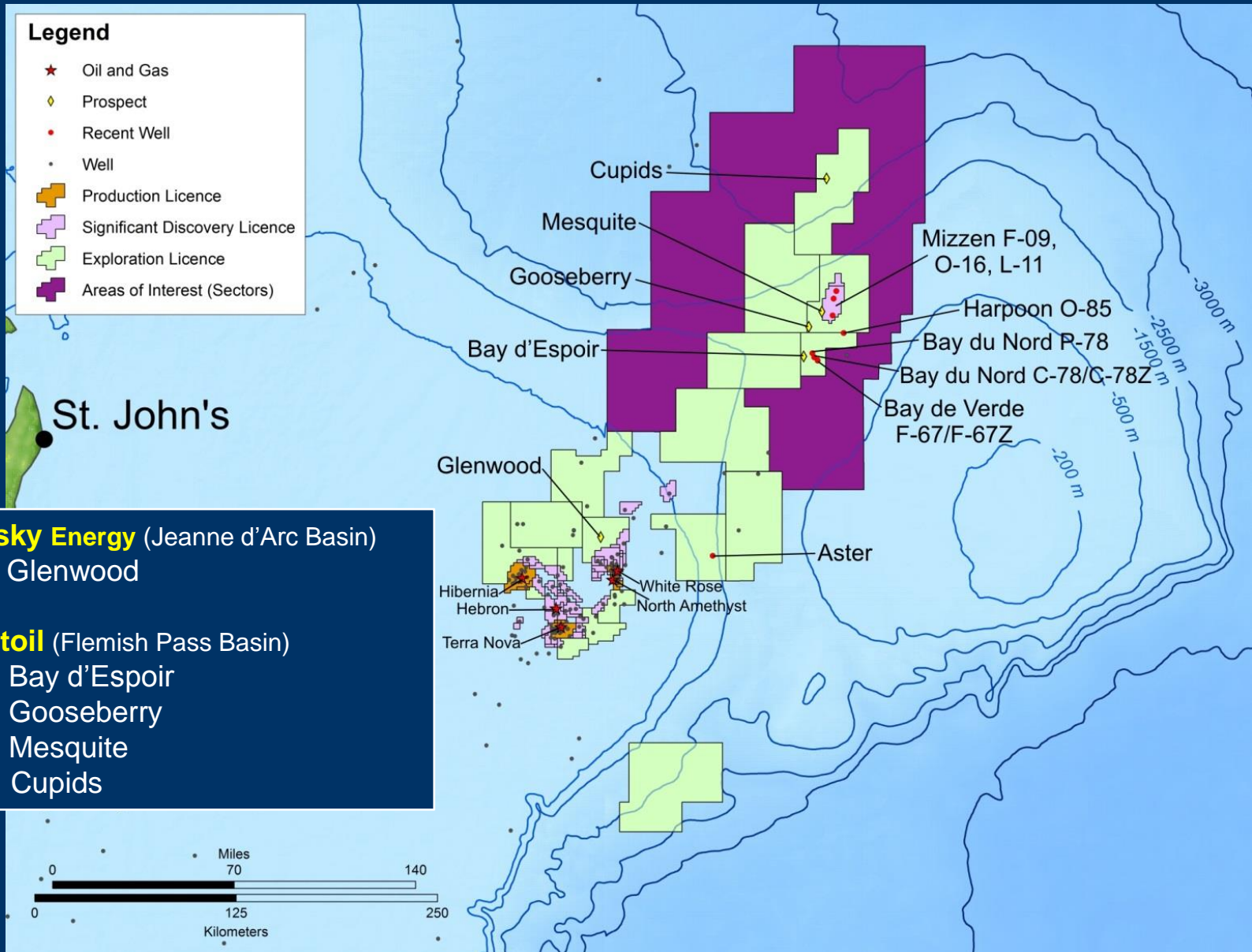
## Current Holdings

Exploration Licences	28
Significant Discovery Licences	54
Production Licences	11

(Data - updated to **January 2015**)



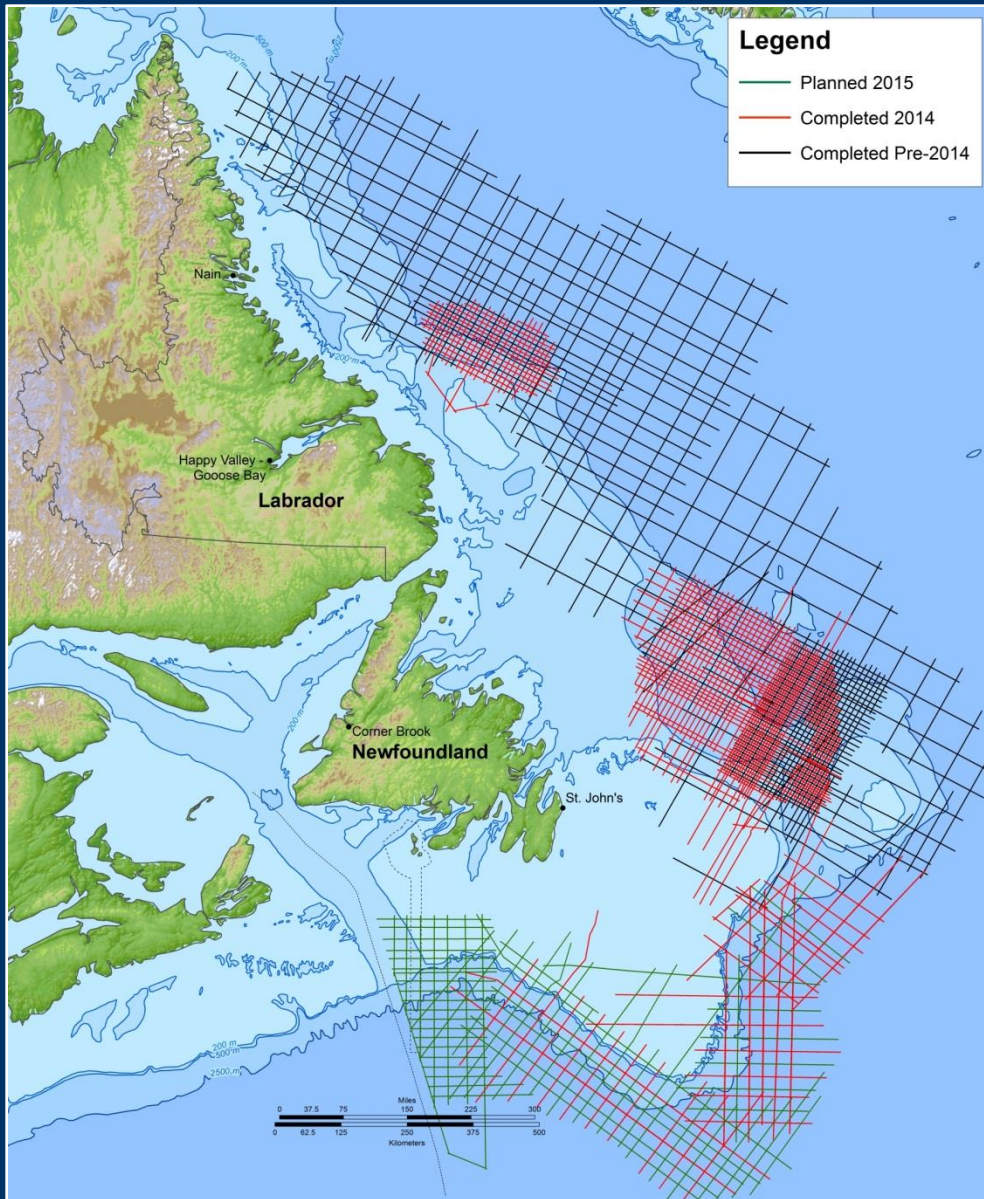
# Current & Future Drilling Prospects



- ✓ **Husky Energy** (Jeanne d'Arc Basin)
  - Glenwood
- ✓ **Statoil** (Flemish Pass Basin)
  - Bay d'Espoir
  - Gooseberry
  - Mesquite
  - Cupids

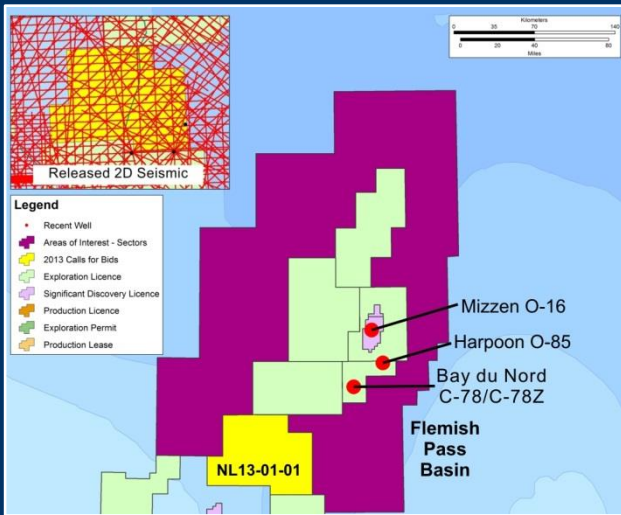


# Multi-Klient Invest (MKI) Seismic Survey



**PGS – TGS - NALCOR**

# Call for Bids 2013 – closed Dec/2014



## NL 13-01-01 (Flemish Pass Basin)

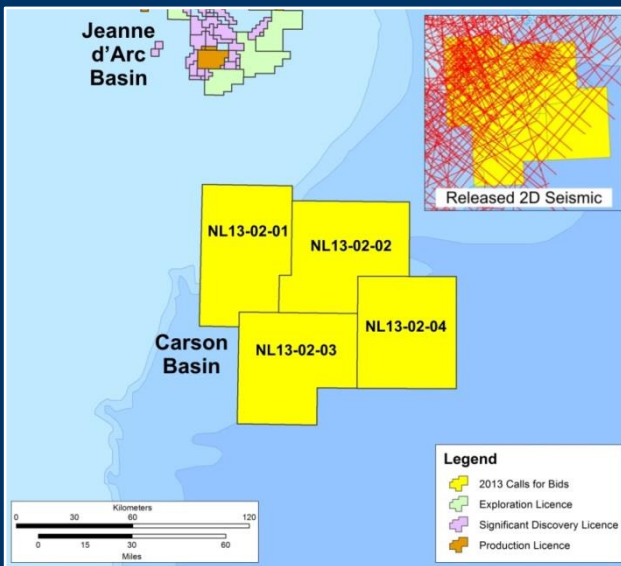
- ✓ One parcel ~266,000 hectares
- ✓ Min. bid \$10 million CAD
- ✓ Bid Amount - **\$559 Million**

### Consortium

ExxonMobil Canada Ltd. – 40%

Suncor Energy Inc. – 30%

ConocoPhillips Canada Resources Corp. – 30%



## NL 13-02-02 (Carson Basin)

- ✓ Four parcels ~1.1 million hectares
- ✓ Min. bid \$10 million CAD per parcel
- ✓ Parcel 2 – Bid Amount **\$21 Million**

### Consortium

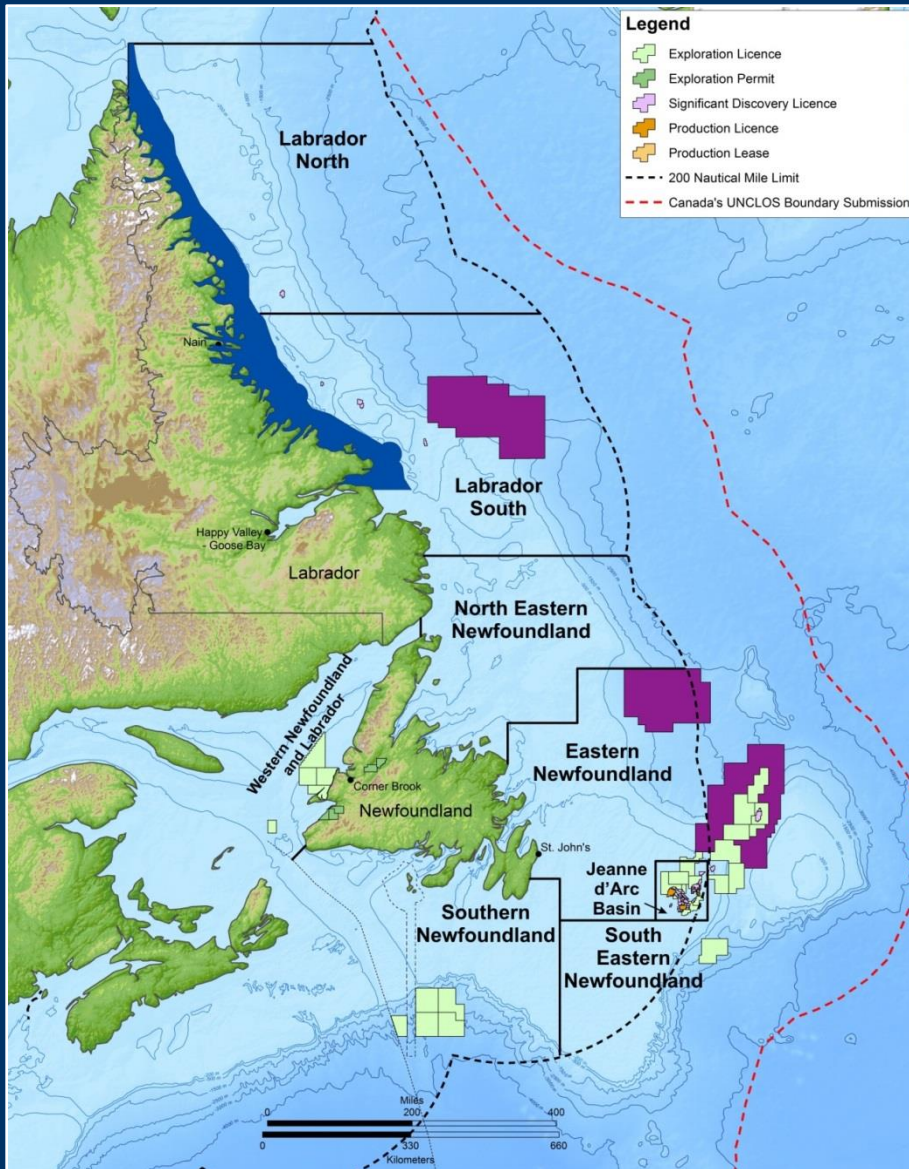
ExxonMobil Canada Ltd. – 50%

Suncor Energy Inc. – 50%

Old Land Tenure System



# Offshore Land Tenure (New)



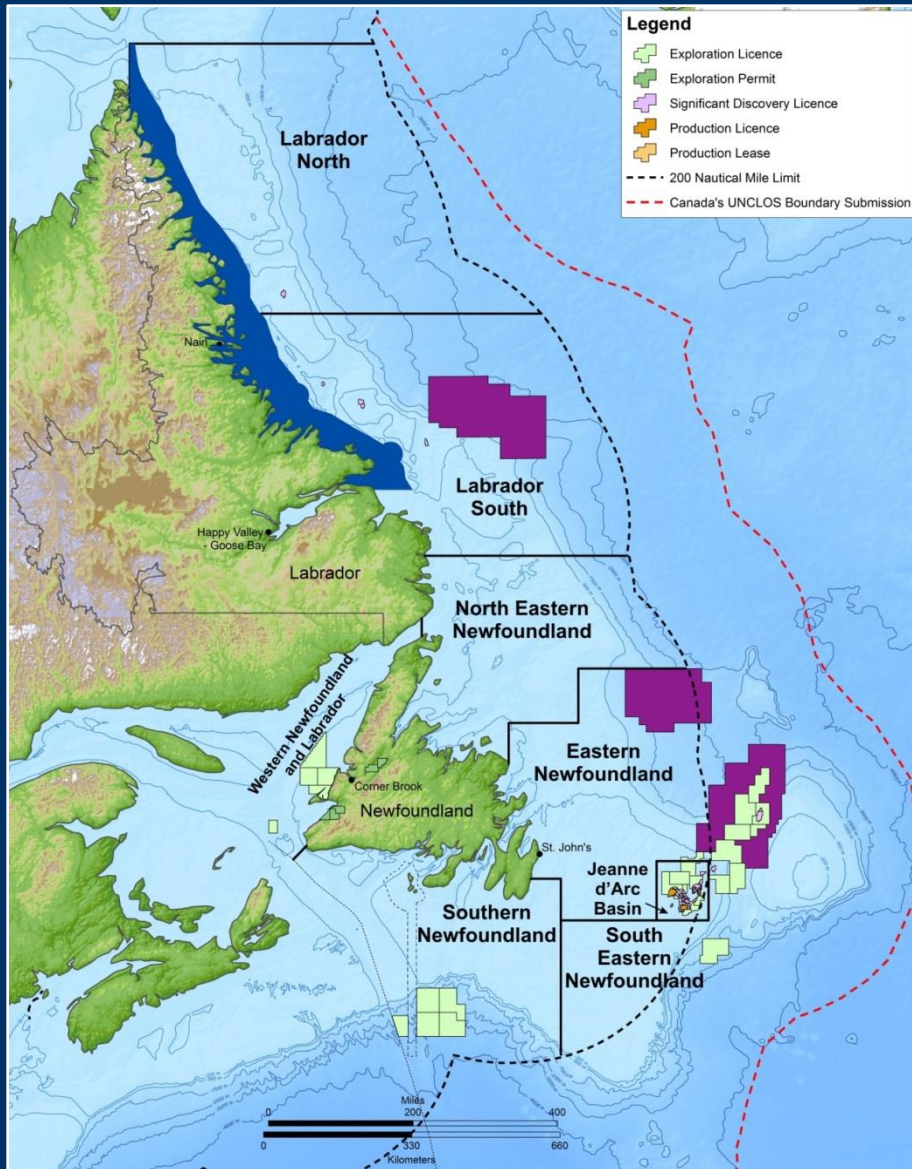
## Divided into 8 Regions

- ✓ Labrador North
- ✓ Labrador South
- ✓ North Eastern Newfoundland
- ✓ Eastern Newfoundland
- ✓ Jeanne d'Arc
- ✓ South Eastern Newfoundland
- ✓ Southern Newfoundland
- ✓ Western Newfoundland

## Three Classifications

- ✓ Mature – 1 yr. cycle
- ✓ Frontier (High Activity) – 2 yr. cycle
- ✓ Frontier (Low Activity) – 4 yr. cycle

# Calls for Nominations – Area of Interest



## 1/ 2015 Licencing Round

- ✓ **Eastern Newfoundland**
  - 2 year cycle
  - 2.4 million hectares

## 2/ 2016 Licencing Round

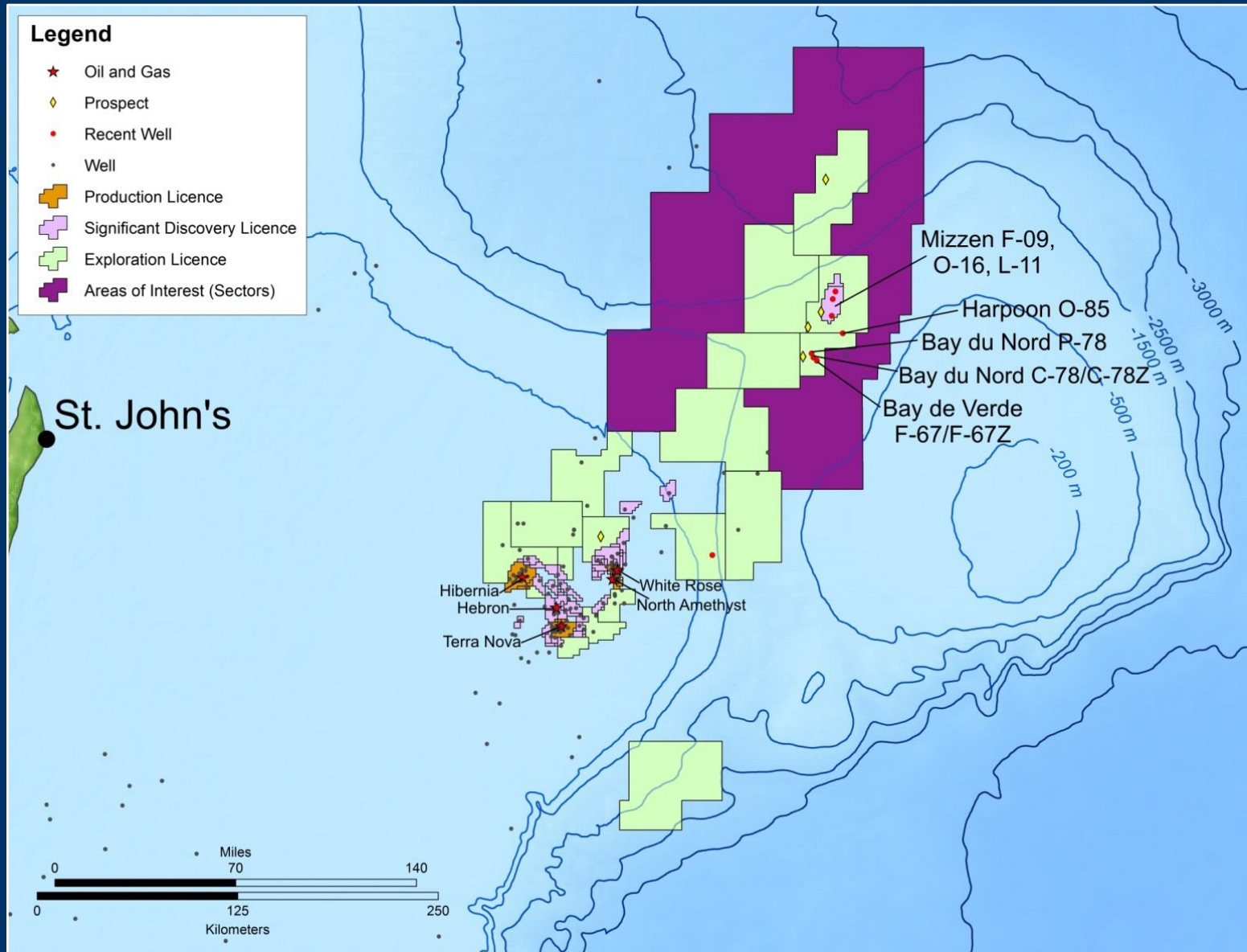
- ✓ **Eastern Newfoundland**
  - 2 year cycle
  - 2.0 million hectares

## 3/ 2017 Licencing Round

- ✓ **Labrador South**
  - 4 year cycle
  - 2.3 million hectares



# Flemish Pass Basin – 2015 Call for Bids





# Summary



St. John's, NL, Canada

## What we have to offer:

- ✓ New 2D seismic data available – highlights excellent regional prospectivity
- ✓ New discoveries/opportunities in new and expanded basins
- ✓ New open and transparent scheduled land tenure system
- ✓ New opportunities with upcoming offshore Calls for Bids



NEWFOUNDLAND & LABRADOR  
Canada

NEWFOUNDLAND & LABRADOR  
Canada

Offshore Activity

Multi Client Invest  
700-750 Eastern Canada  
20 Blocks Survey

Offshore Opportunity  
Lands of Interest  
Western Newfoundland

Offshore Opportunity  
Lands of Interest  
Flemish Pass Basin/North Central Ridge

Offshore Opportunity  
Lands of Interest  
Carson Basin

Current and Future Production

Table with white tablecloth, chairs, and brochures.

Curved reception desk with logo and text: Newfoundland Labrador it's happening here.

THANK YOU

[www.nr.gov.nl.ca/nr/](http://www.nr.gov.nl.ca/nr/)

Booth #26